

CHUBB

Sovereign



*The best safe
in the world*



THE BEST SAFE IN THE WORLD

CHUBB Sovereign

For over 160 years Chubb have been safeguarding the treasures of the World. 160 years experience, insight and research into defeating the criminal.

Today's criminals have at their disposal a formidable armoury of tools and attack-methods. Thermal cutting, explosives, high-speed drills, impact tools and forcing techniques are all readily available as by-products of modern industry.

Designed to give superb all-round protection against all forms of attack, the Sovereign incorporates advanced materials and safemaking techniques unique to Chubb.

Research, Development and Testing

Chubb Research Ltd. – an independent company within the Chubb Group – operate what are probably the finest in-house research facilities of any safe manufacturer in the World.

Very considerable resources are devoted to a continuing programme of development and testing aimed at producing better barrier materials and better methods of safe construction.

Sovereign Passes the Test

In addition to an exhaustive programme of Chubb testing the Sovereign has been tested, quite independently, in France by *Laboratoire du Feu* in order that the safe could be rated for insurance purposes by *Assemblée Plénière des Sociétés d'Assurances*. This was a

carefully planned, professional attack by skilled technicians, working under ideal conditions, and knowing the exact construction of the safe... and it failed to defeat the Sovereign door or body.

During this test the Chubb Sovereign demonstrated exceptional resistance to prolonged combination attacks during which the testers had at their disposal:

- heavy duty oxyacetylene torches, and unlimited gas supplies
- ferrous rods with which to intensify the effects of oxyacetylene attack
- a power drill
- a pneumatic pick
- hammers, chisels and other forcing tools.

Having successfully resisted the planned series of official test attacks, the safe was subjected to a set of complementary tests featuring a thermic lance. Again the attacks were determined and prolonged.

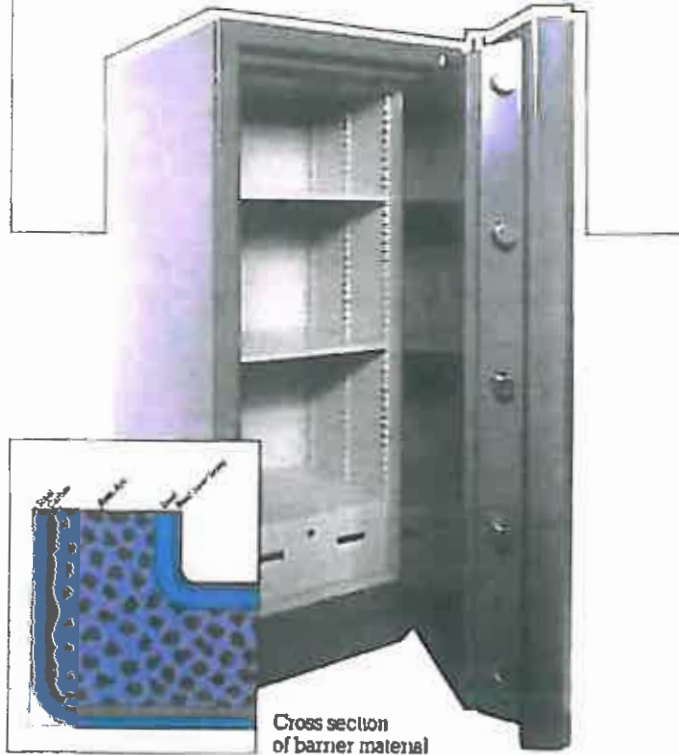


An Exceptional Success

As a result of these tests the Chubb Sovereign was awarded a quite exceptional maximum insurance rating by *Assemblée Plénière des Sociétés d'Assurances* of 1,200,000 francs (equivalent to approximately £140,000 Sterling). a rating higher than any previously awarded.

Developments in industrial cutting equipment mean that today's burglars have at their disposal a formidable armoury of tools and attack methods.

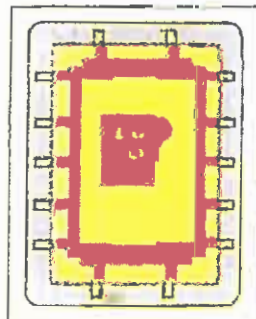
The Chubb Sovereign provides very high security protection against all known forms of safe attacks including the following: • Explosives • Power drills, including diamond drills • Pneumatic and electric hammers • Oxy-acetylene • Oxy-arc • Arc-air slicer • Thermic lance.



CONSTRUCTION

The body and door are constructed from inner and outer steel plates enclosing a seamless monolithic casting of Chubb Anti-Arc barrier material. This composite Anti-Arc material developed by Chubb consists of nuggets of very hard abrasion resistant material held in a matrix which itself has very high resistance to thermal attacks. This composite material is securely anchored to an inner steel plate.

An additional layer of carbon based material provides further resistance to attack with thermal tools. This multilayer construction is both used in the body and door, to provide all round balanced protection.



The door of the safe - also formed of a one-piece casting of anti-arc material, is secured into the four sides of the safe body by means of Chubb Isolator Boltwork.

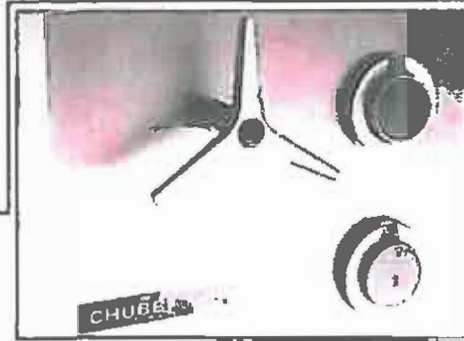
The sovereign safe provides protection against attacks with all these cutting tools

BOLTWORK

The door is secured by 38 mm diameter moving bolts which extend from all four sides of the door. When the safe is locked, Chubb's design of Isolator completely disconnects the bolt throwing handle from the bolts.

The Sovereign is fitted with glass relockers to protect the locks from explosives attack.

Access to the back of the lock case is controlled by two Chubb locks.



LOCKS

The Sovereign is fitted as standard with two high security Chubb locks. There is a choice of four wheel combination locks, each capable of being set to 100,000,000 different codes, or a keylock of equivalent security.

An optional timelock can also be fitted.

FITTINGS

Internal racking accepts the following optional fittings

- Heavy duty shelves
- Lockable cupboards
- Lockable drawers

(See details overleaf).

FINISH

The outside of the door is finished in stainless steel, with a matching aluminum pull handle. The safe is painted light grey on the inside and charcoal grey on the outside, both in satin finish.

BASE FIXING

The Sovereign safe can be prepared for secure base fixing.

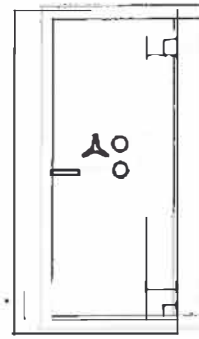
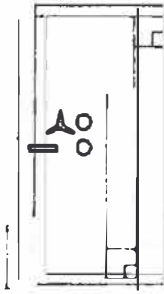
PROOF OF PERFORMANCE

Since its launch in 1979, hundreds of Sovereign safes have been sold, yet at the time of writing, Chubb know of no successful attacks by burglars on any Sovereign safe.

The Sovereign safe provides such a high level of protection that it is above the standard cash rating bands of many UK insurance companies, and insurance cover can be negotiated for very large cash holdings in a Sovereign safe.



DIMENSIONS



The Chubb Sovereign is made in Britain

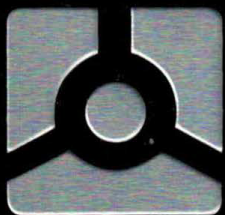
SIZE	5520		6428/21	
Number of bolts around door	14		16	
External height	1626mm	(64")	1855mm	(73")
External width	750mm	(29.5")	953mm	(37.5")
External depth	775mm	(30.5")	826mm	(32.5")
External projection of handle	64mm	(2.5")	64mm	(2.5")
Total external depth with door open at 90°	1450mm	(57")	1700mm	(67")
Internal height	1397mm	(55")	1625mm	(64")
Internal width	506mm	(20")	711mm	(28")
Internal depth	482mm	(19")	533mm	(21")
Internal volume	343 litres	(12.1ft ³)	616 litres	(21.7ft ³)
Nett weight	2515kg	(49.5cwt)	3385kg	(66.5cwt)

CHOICE OF FITTINGS

	available		available	
Shelves	available		available	
Lockable full width cupboards (height)	305mm	(12")	or 315mm (12") 554mm (23")	
Full width drawer (height)	163mm	(6.5")	not available	
Pair of drawers side by side (height)	165mm	(6.5")	165mm	(6.5")

EXPORT PACKAGING

Case height	1850mm	(73")	1160mm	(45.7")
Case width	920mm	(36.2")	2010mm	(79")
Case depth	1000mm	(39.4")	1120mm	(44")
Gross weight	2655kg	(5850lb)	3501kg	(7940lb)



MEGASAFE
HIGH SECURITY SAFES

(800) 345-6552

www.megasafe.com